

Energy Forecasting at the Secondary Substation Level for DSO Participation in Residential Local Flexibility Markets

Nikolaos Fesakis, Theodore Tranos, Thomas Vasileiou, Maria Koutsoupidou, Sotirios Christopoulos, Georgios Loukos



Local flexibility market

Decarbonization



Distributed Energy Resources (DERs) & Renewable Energy Systems (RESs)



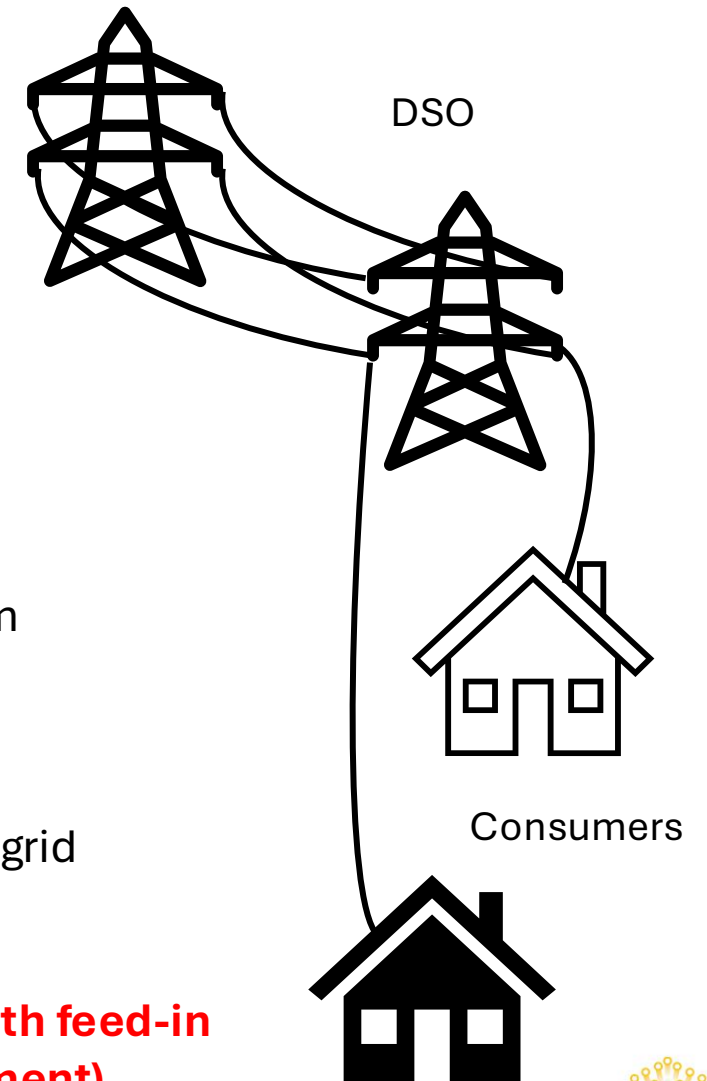
Power distribution



Issue for Distribution System Operators (DSOs):

- Congestion
- Voltage violations
- Increased "stress" to the grid
- Power cuts

DSO address the issues with feed-in management (RES curtailment).



HEDGE-IoT



Local flexibility market

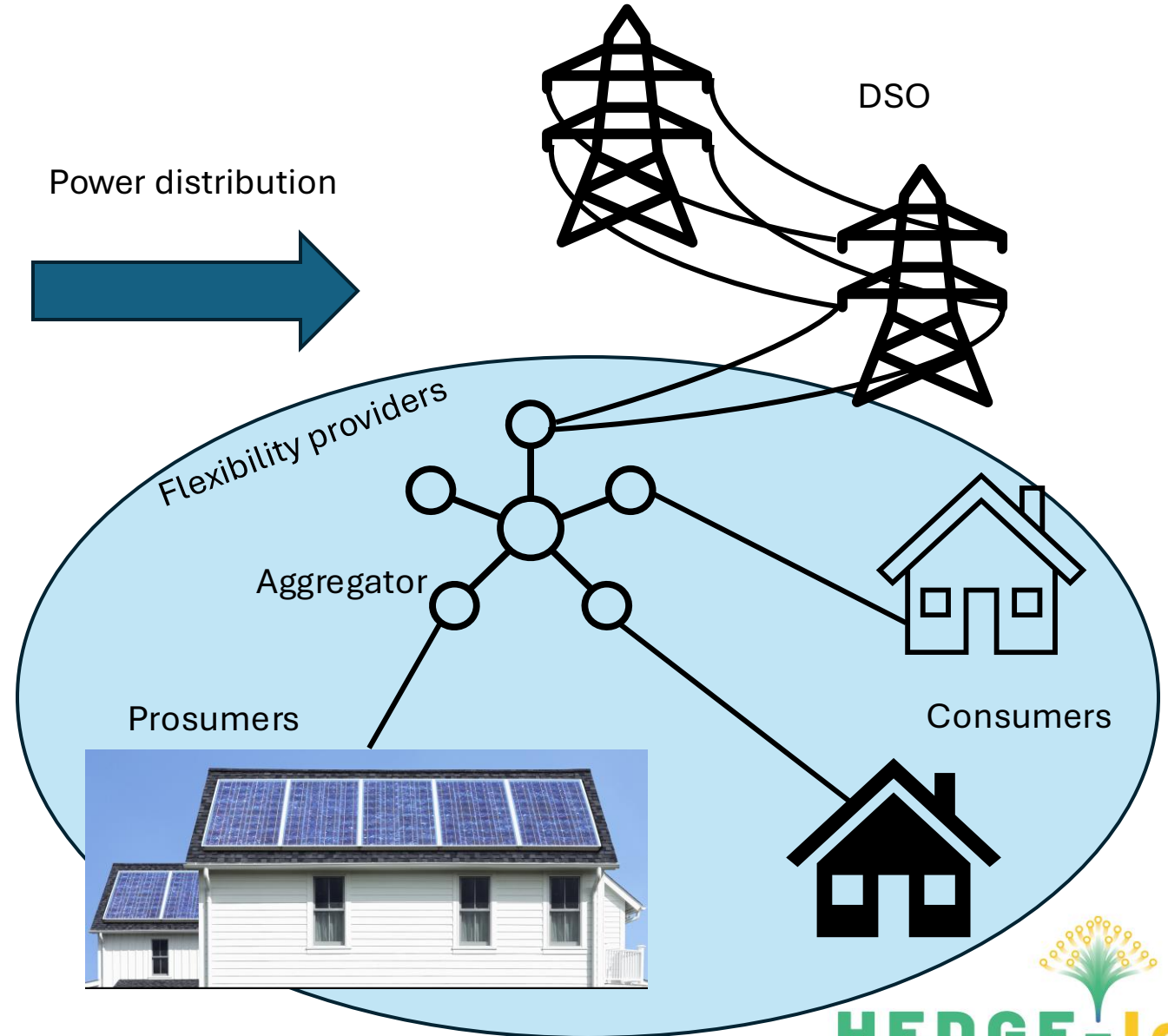
Decarbonization



Distributed Energy Resources (DERs) & Renewable Energy Systems (RESs)



Power distribution

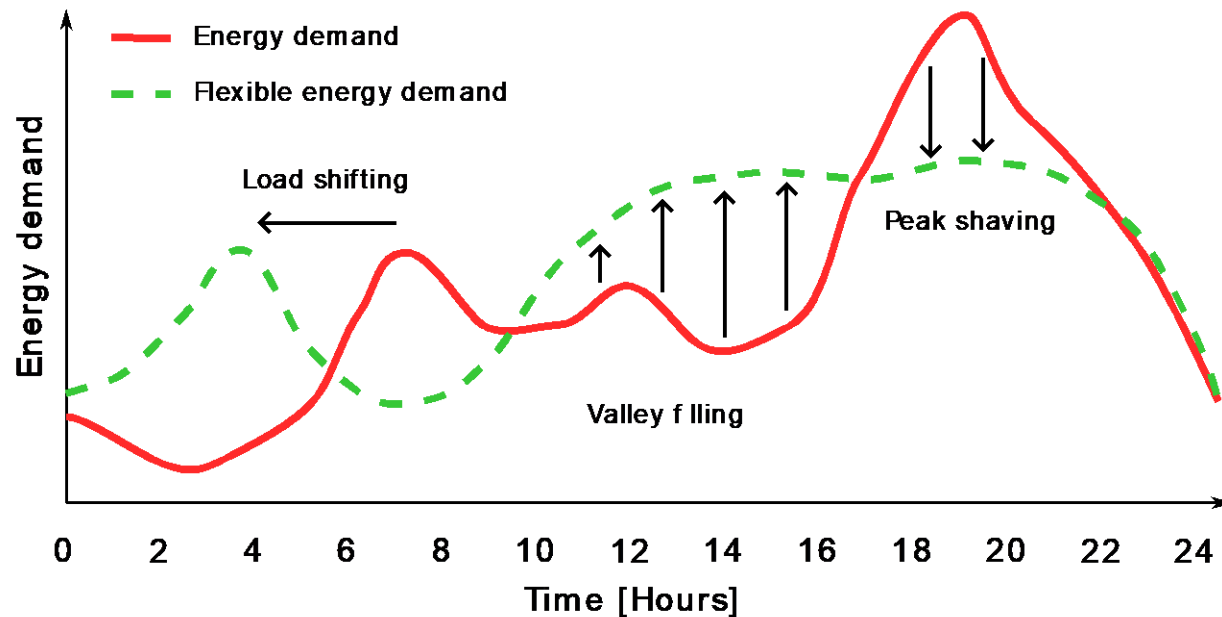


HEDGE-IoT



Explicit flexibility

Proactive commitment to modify energy consumption or generation.



Simplified LFM (DSO side)

Forecast and
grid analysis

Flexibility
request

Dispatch

Tender &
bidding

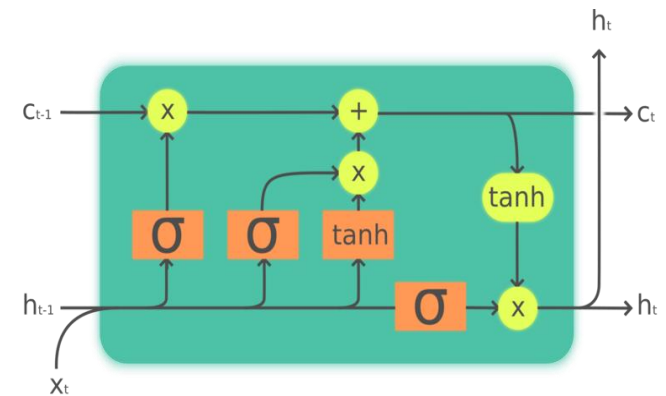
Validate &
settle



HEDGE-IoT

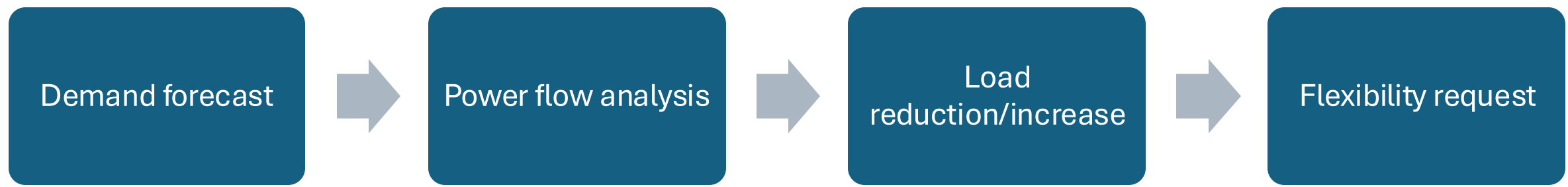
Forecasting

- Forecasting individual households is challenging, due to its stochastic nature.
- Forecasting at substation level using Long Short-Term Memory model (LSTM).



LSTM is a recurrent neural network made of the shown unit cell.

Process for forming flexibility requests



Data and LSTM training

Real world data from secondary substation of the Greek DSO:

- Energy consumption at low voltage level
- Power quality at low voltage level
- Temporal granularity 15 mins
- Metering device (Meazon, Greece)

Weather data from the open meteo platform

Market operating with Market Time Unit (MTU) of 15 mins

Training set 8 weeks of data to predict the 6th MTU

Forecasting results evaluated using $MAPE = \frac{1}{n} \sum_{i=1}^n \left| \frac{Y_i - \hat{Y}_i}{Y_i} \right|$

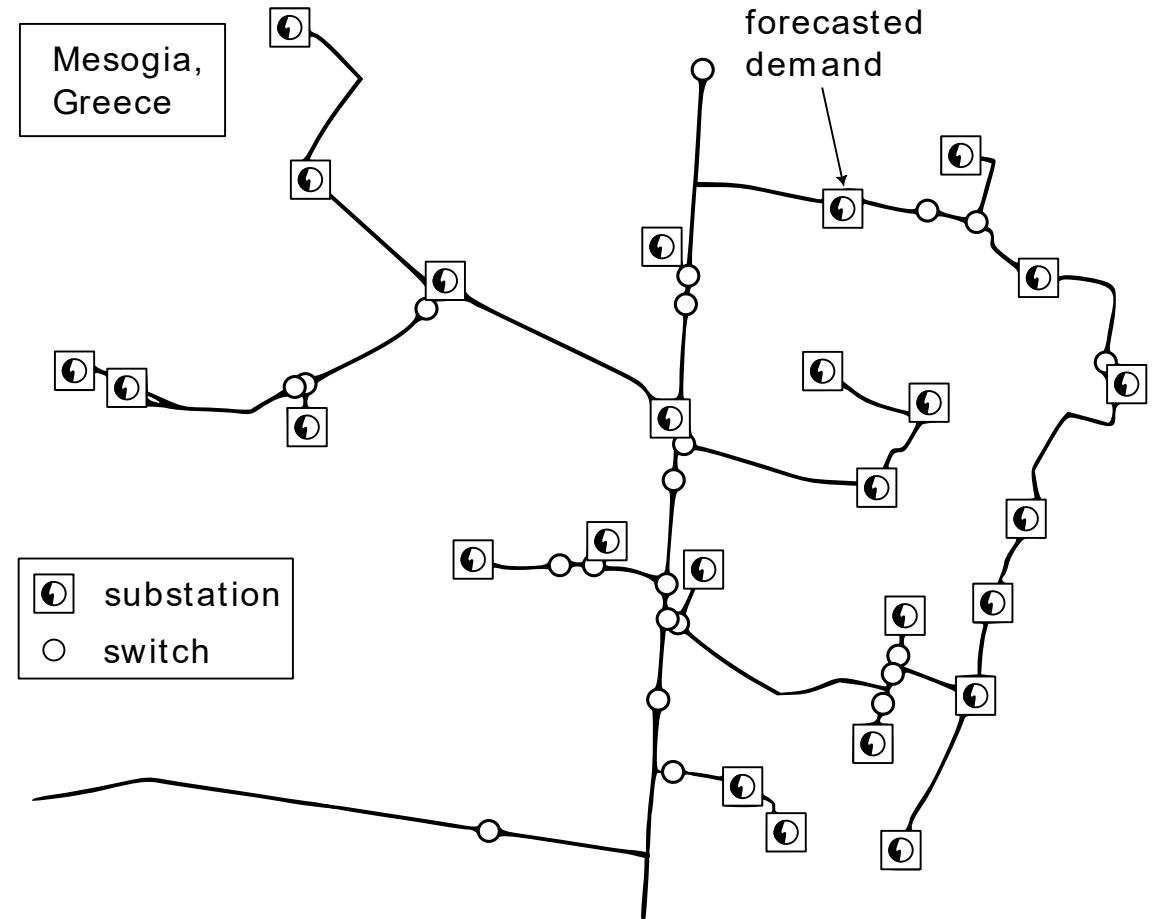
predicted value

actual value



Power flow analysis

- Forecasted energy converted to active power
- Powerfactory software (ver SP5, DlgSILENT GmbH, Germany)
- Power factor set to 0.95
- Load factor for remaining urban substations set to 0.80



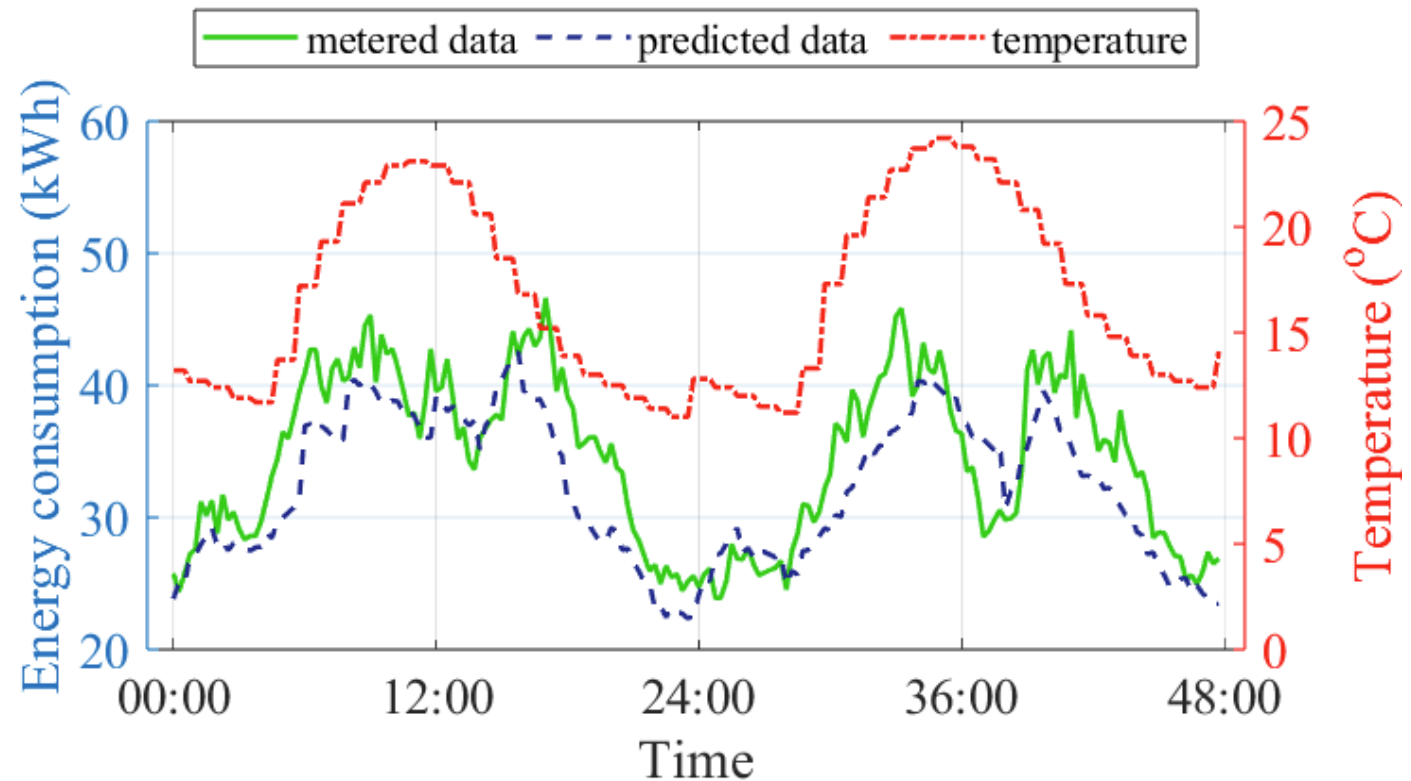
Network topology used for power flow analysis.

Forecasting results

LSTM prediction achieved a mean absolute percentage error of 0.085.

Forecasted energy consumption at substation level:

- Predicted time series at 6th MTU
- Prediction of voltage violations
- Validation of dispatched flexibility

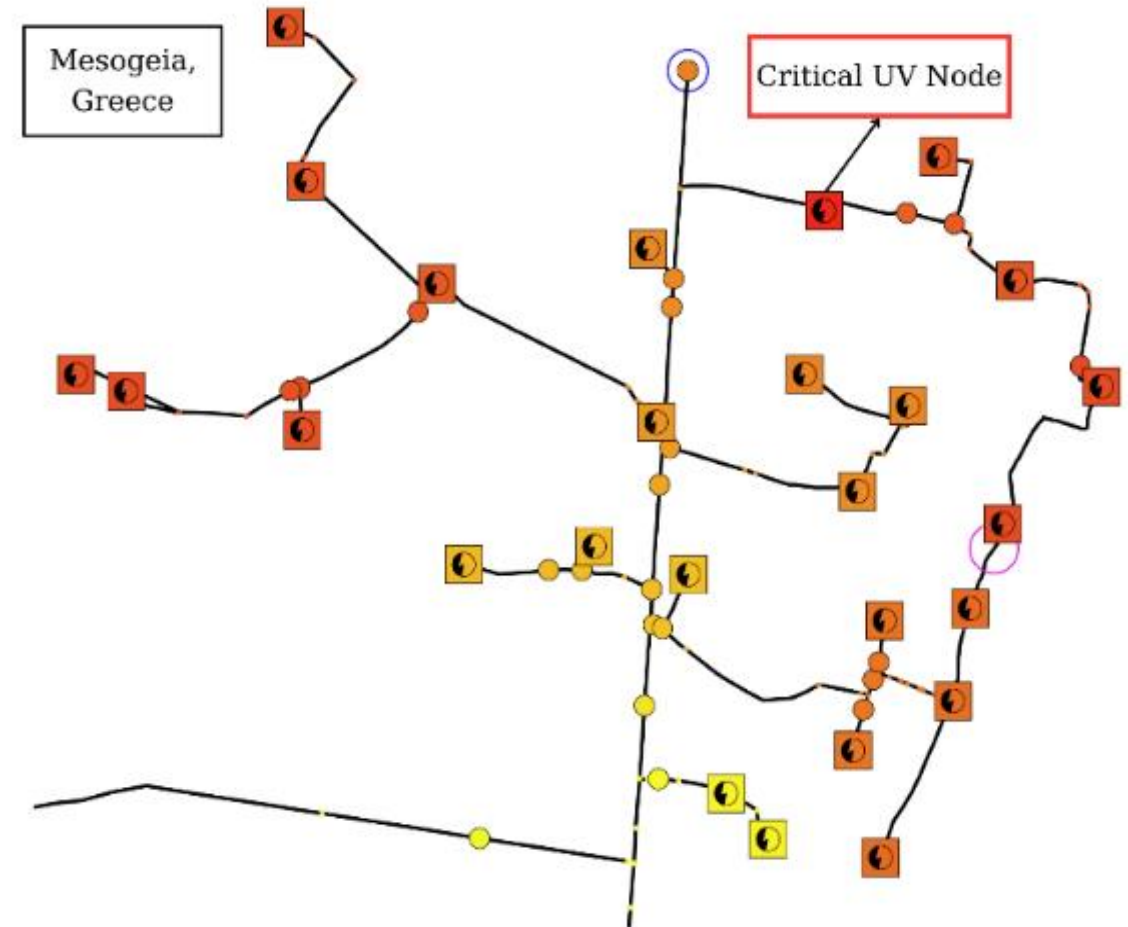


Grid analysis results

Grid analysis:

- Identification of undervoltage event
- Effect of event on the wider grid
- Required flexibility of 84kW to maintain grid stability

Flexibility from residential consumers.



Undervoltage issue identified in power flow analysis.

Conclusions

The study explored:

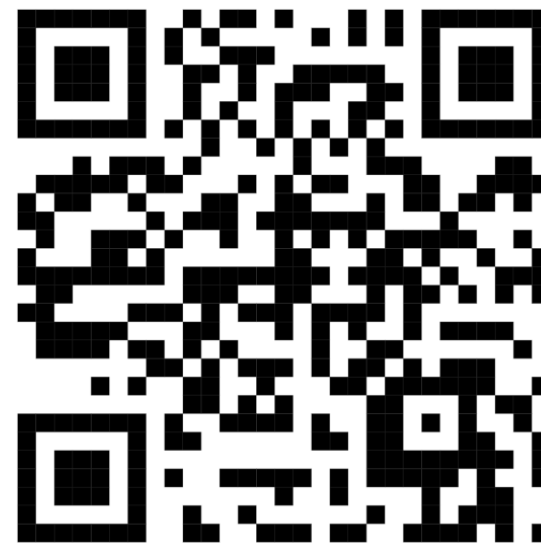
- AI-driven load forecasting
- Power flow analysis to form flexibility requests

DSO related benefits:

- Proactively identify and address stress conditions
- Dynamic procurement of flexibility requests
- Baseline for validating demand-response event

Next steps

- Improve the LSTM algorithm to further reduce the error by adding features (i.e. weekdays/weekends)
- Apply the forecasting algorithms to aggregated consumers (flexibility portfolios) to calculate their baseline within a flexibility market
- Test the proposed methodology in a Demo Flexibility Market within the framework of the HEDGE-IoT project



Thank you for your attention

